

Replacement Guide

EMCO®

For Stationary Window on Self-Storing Door with Retractable Insect Screen

IMPORTANT: READ ENTIRE GUIDE BEFORE BEGINNING INSTALLATION.

PLEASE NOTE: Proper assembly, installation and maintenance are essential if the benefits of your EMCO® product are to be fully attained. Therefore, please read and follow this Installation Guide completely. If your abilities do not match this procedure's requirements, contact an experienced contractor.

You may direct any questions to the **Solution Center** at 1-800-933-3626, Monday through Friday, 7 a.m. to 7 p.m. Central Time, and Saturday and Sunday, 8 a.m. to 5 p.m. Central Time.

⚠ WARNING:

Improper use of hand or power tools could result in personal injury and/or product damage. Follow equipment manufacturer's instructions for safe operation. Always wear safety glasses.

⚠ WARNING:

Weight of window and door unit(s) and accessories will vary. Use a reasonable number of people with sufficient strength to lift, carry, and install window and door unit(s) and accessories. Always use appropriate lifting techniques.

⚠ WARNING:

Wear gloves, safety glasses or eye shields when handling glass. Failure to do so may result in severe personal injury.

REQUIRED TOOLS

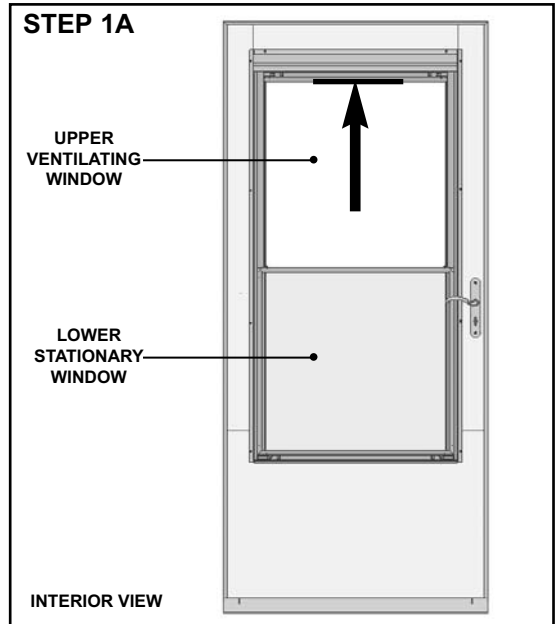
— Safety Glasses

— Gloves

— Filament or duct tape

1. POSITION UPPER VENTILATING WINDOW:

A. Raise the upper ventilating window to the highest position.



EMCO®

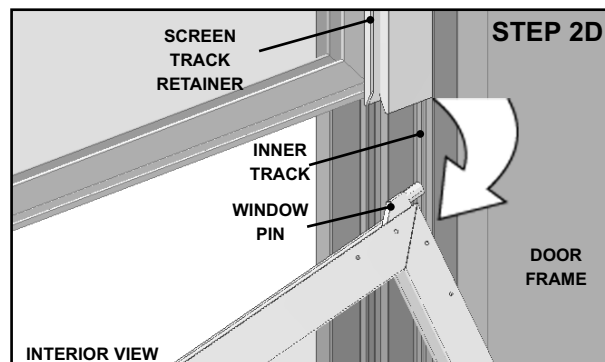
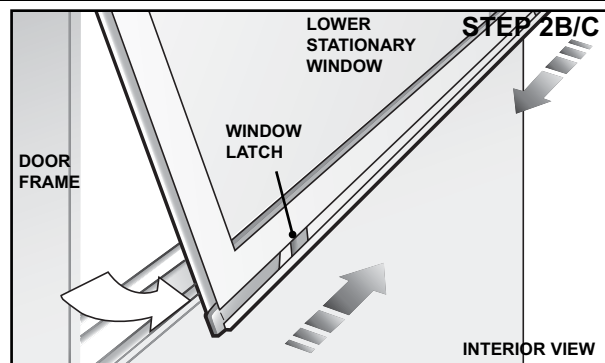
2. REMOVE LOWER STATIONARY WINDOW:



WARNING

If you are replacing this window due to breakage or cracking, take caution as glass may break further and potentially cause personal injury. Tape broken glass with filament or duct tape before removal to reduce glass fragmentation.

- A. Raise the lower stationary window up slightly until it touches the bottom of the screen track retainers.
- B. Slide the window latches on the bottom window toward each other.
- C. While holding the latches in, lift the lower portion of the window toward you.
- D. Rotate the window clockwise to remove the pin from the inner track.



3. REINSTALL LOWER STATIONARY WINDOW:

- A. Angle lower window and insert top window pins into interior tracks with window latches facing the interior. Raise window until top of window seats into bottom of screen track retainers.
- B. Slide the window latches on the bottom of the window toward each other. Rotate window into place. Release latches to secure window in frame.

