

Replacement Guide

EMCO®

For Shade Cover Plate on EMCO® HDSH Screen Door with Retractable Shade

IMPORTANT: READ ENTIRE GUIDE BEFORE BEGINNING INSTALLATION.

PLEASE NOTE: Proper assembly, installation and maintenance are essential if the benefits of your Andersen® product are to be fully attained. Therefore, please read and follow this Replacement Guide completely. If your abilities do not match this procedure's requirements, contact an experienced contractor.

You may direct any questions to the **Solution Center** at 1-800-933-3626, Monday through Friday, 7 a.m. to 7 p.m. Central Time, and Saturday and Sunday, 8 a.m. to 5 p.m. Central Time.



WARNING:

Improper use of hand or power tools could result in personal injury and/or product damage. Follow equipment manufacturer's instructions for safe operation. Always wear safety glasses.



WARNING:

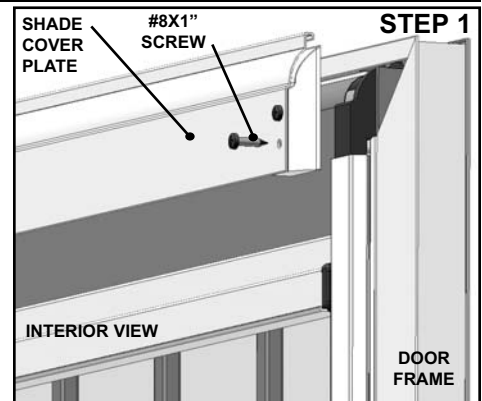
Weight of window and door unit(s) and accessories will vary. Use a reasonable number of people with sufficient strength to lift, carry, and install window and door unit(s) and accessories. Always use appropriate lifting techniques. Failure to do so may result in injury.

REQUIRED TOOLS

- Phillips Head Screwdriver
- Safety Glasses

1. REMOVE SHADE COVER PLATE:

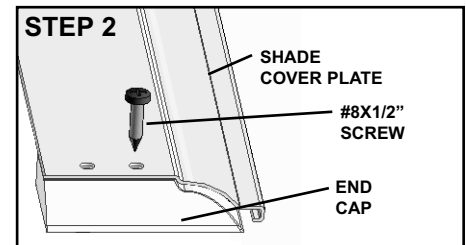
- A. Using a phillips head screwdriver, remove the bottom screw from each end of the shade cover plate. The top screws fasten the shade cover plate to the end caps and do not need to be removed at this time.
- B. Once loose, the shade cover plate may be removed by lifting up and towards you. Properly dispose of screws. New ones are provided in the replacement kit.



2. REMOVE END CAPS:

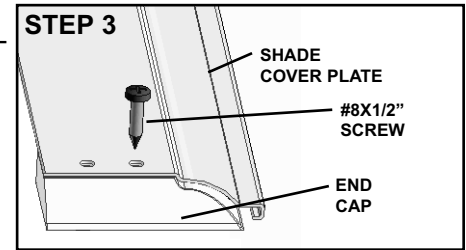
- A. Remove both left and right end cap. Using a phillips head screwdriver, remove the top #8 x 1/2" screw from each end of the shade cover plate.

TIP: Lay each end cap next to the end it came off of. This will assist you in maintaining the correct orientation of the end caps for the new cover plate.



3. INSTALL END CAPS ON REPLACEMENT SHADE COVER PLATE:

- A. Using a phillips head screwdriver, install a new #8 x 1/2" screw through the top right hole of shade cover plate into top hole of the right end cap. The bottom screw fastens the shade cover plate to the door frame.
- B. Repeat Step 3A to install the left end cap.
- C. Properly dispose of shade cover plate.



4. INSTALL SHADE COVER PLATE:

- A. Install shade cover plate. Make sure that the edge of the shade cover plate hooks over the lip at the top of the door frame.
- B. Align holes and secure with the two #8 x 1" screws provided.

