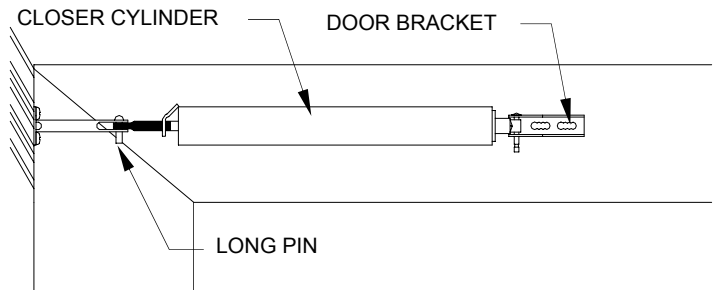


REPLACEMENT HINGE SIDE Z-BAR INSTALLATION INSTRUCTIONS FOR TRADITIONAL AND CROSSBUCK DOORS

IF YOU HAVE ANY QUESTIONS REGARDING THE INSTALLATION OF THE REPLACEMENT Z-BAR PLEASE CALL OUR CUSTOMER SERVICE DEPARTMENT AT 1-800-933-3626.

1. SEPARATE CLOSERS:

Open the door a few inches and set the hold open washers on each closer to release tension on the closers. Separate the two (2) closers from the door by removing the long pins that hold the closer cylinders to the door brackets as shown. BE SURE TO SAVE THE PINS.

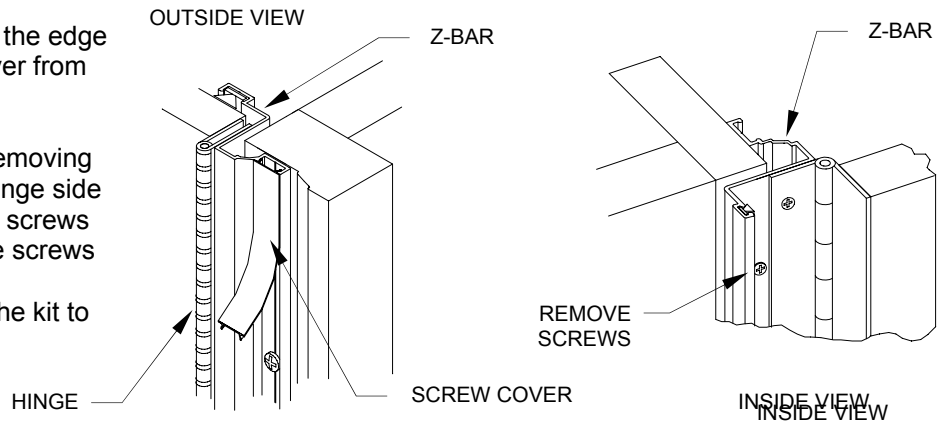


2. REMOVE SCREW COVER AND DOOR:

Remove the screw cover by prying up the edge with a screwdriver and peeling the cover from the screw cover track.

Remove the door from the house by removing the seven (7) screws that attach the hinge side Z-bar to the brickmold and the four (4) screws that secure the Z-bar to the jamb. The screws do not need to be saved.

Replacement screws are provided in the kit to re-attach the Z-bar to the brickmold.



3. REMOVE THE HINGE SIDE Z-BAR:

Support the door on a flat surface, or saw horses, being careful not to scratch the surface of the door. Remove the screws holding the hinge side Z-bar to the door then discard the screws and hinge side Z-bar.

If at this time there are no screws on the edge of the door, then install eleven (11) #8 x 1" flat head screws into the holes left by the discarded screws. Make sure that the screw heads are flush with the side of the door.

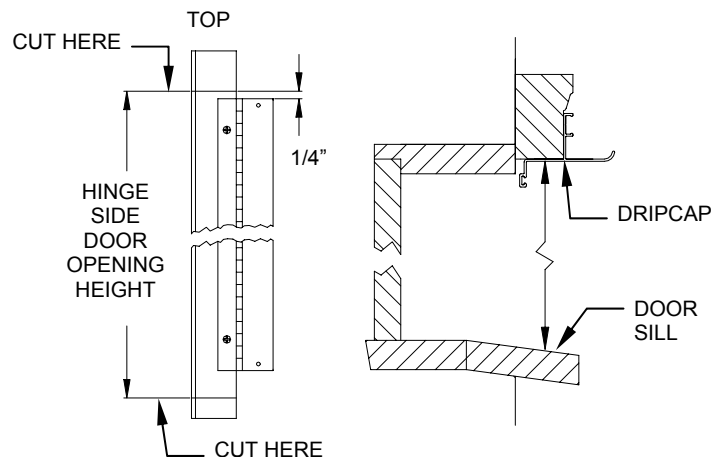
NOTE: Remove the serial label from inside of the hinge side Z-bar and save for future warranty claims.

4. CUT NEW HINGE SIDE Z-BAR TO LENGTH:

To determine which end of the Z-bar is top, hold the Z-bar up to the door opening to the side you desire to be hinged. The screw track will be on the left side for left hinge installation and to the right for right hinge installation. Mark a cutting line on the Z-bar 1/4" up from the top of the hinge. Cut the Z-bar at that line.

Measure your door opening height on the hinge side from the underside of the drip cap to the top of the door sill. Using this measurement, measure down from the top of the Z-bar, mark a cutting line and cut to length.

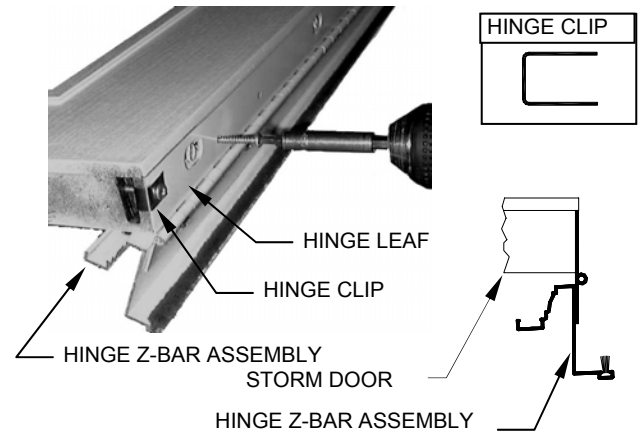
Note: If the sill of your entryway has an angled slope, you may wish to cut the Z-bar at a slight angle to match.



5. ATTACH HINGE Z-BAR ASSEMBLY TO DOOR:

Place the hinge Z-bar assembly on the hinge side edge of the door as shown in the illustration. Make sure the top of the hinge is at the top of the door. Position the hinge leaf flush with the top edge of the door and install the hinge clip to hold the hinge in place.

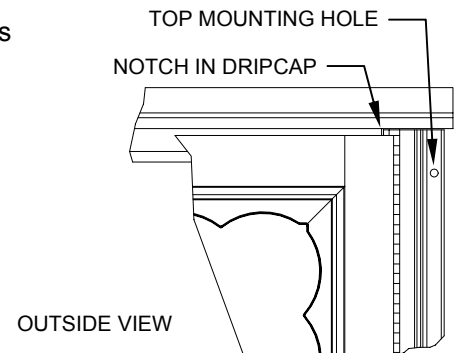
Drill a 1/8" pilot hole and secure the clip to the hinge and door with (1) one #8x1" screw. Firmly pinch the hinge edge of the door to prevent the door halves from separating as the screw holes are drilled. Drill 1/8" pilot holes 1" deep through each of the 10 (ten) predrilled holes on the hinge. **NOTE: Holes must be drilled at least 1" deep.** Secure the hinge to the door with 10 (ten) #8 x 1" screws.



6. RE-INSTALL DOOR IN OPENING:

Position the door in the opening so that it is flush with the notch in the dripcap and is touching the underside of the dripcap. This may cause the dripcap to slightly overhang the Z-bar. Holding the Z-bar in place, align the holes in the dripcap with the holes in the brickmold. Install one (1) #8 x 1" screw from the included screw pack in the top mounting hole **ONLY**. Using a level, make sure the Z-bar runs straight up and down. Install six (6) #8 x 1" screws from the screw pack to hold the door in place.

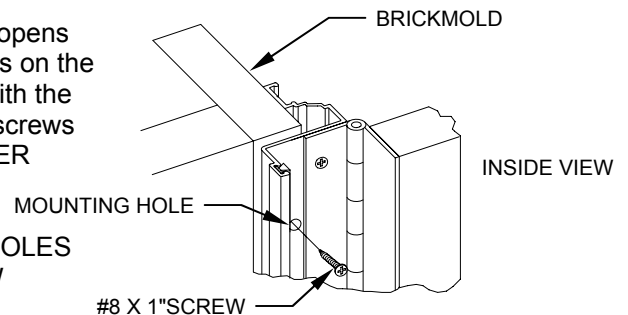
NOTE: IF THE HOLES IN THE Z-BAR DO NOT LINE UP WITH THE HOLES IN THE BRICKMOLD, DRILL 1/8" PILOT HOLES BEFORE INSTALLING NEW SCREWS.



7. SECURE DOOR IN OPENING:

After the door is mounted to the opening, check to make sure the door opens freely. With the door open, locate the four (4) pre-drilled mounting holes on the flat side of the Z-bar. Making sure the holes in the Z-bar are lined up with the holes in the jamb, secure the flat side of the Z-bar with four (4) #8 x 1" screws from the included screw pack. **DO NOT DEFORM THE Z-BAR BY OVER TIGHTENING THE SCREWS.**

NOTE: IF THE HOLES IN THE Z-BAR DO NOT LINE UP WITH THE HOLES IN THE JAMB, DRILL 1/8" PILOT HOLES BEFORE INSTALLING NEW SCREWS.



8. RE-ATTACH CLOSERS:

Re-attach the two (2) closers to the door. The door brackets should still be on the door. Join the closer cylinders with the door brackets and secure with the long pins removed in step 1.

9. INSTALL SCREW COVER:

Place the edge of the screw cover over the track at the top of the Z-bar. Using your thumb, press the screw cover into the track along the entire length of the Z-bar. Making sure that the screw cover is flush with the top of the Z-bar, trim off any excess at the bottom of the Z-bar with a razor knife or a sharp pair of scissors.

