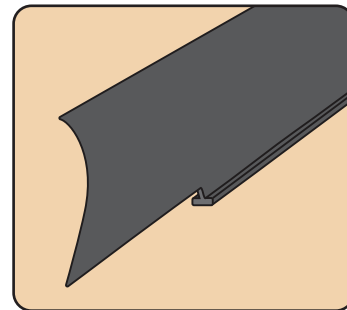


Installation Guide

for Replacement Sealing Fin for Andersen® LuminAire® Sliding Patio Retractable Insect Screen Door

For installation help please visit www.AndersenLuminAire.com/install



Please Do Not Return Product to Store!

PLEASE call the Storm Door Solution Center at 844-813-6664, with any questions regarding installation, lost part replacement, or anything else related to your retractable insect screen purchase. Replacement parts can also be found at: parts.andersenstormdoors.com

Read this entire guide before you begin your installation. If your abilities do not match the requirements of this installation, contact an experienced contractor.

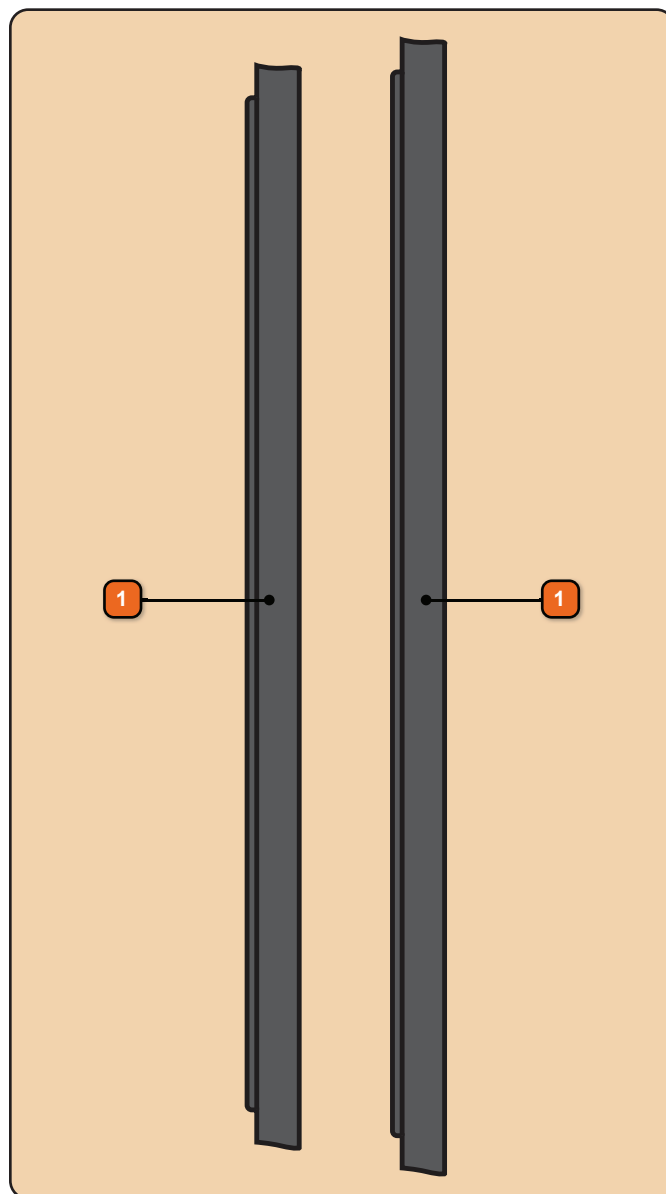
SEALING FIN REPLACEMENT PART OVERVIEW

Your installation kit should contain the following parts.

- 1** Sealing Fin (1 pcs. 80", 1 pcs. 82")

NOTICE

To avoid product damage, be sure to place all parts of your retractable insect screen on a soft non-abrasive surface such as carpet, drop cloth placed on your lawn or cardboard.



Emco Enterprises, Inc., is a wholly owned subsidiary of Andersen Corporation. Emco Enterprises, Inc. manufactures and supports the limited warranties for Andersen® and EMCO® doors. "Andersen", "EMCO" and all other marks where denoted are trademarks of Andersen Corporation. ©2025 Andersen Corporation. All rights reserved.

Andersen SDD, PO Box 853
Des Moines, IA 50306-0853
5-2025 r1 Print in Color

p/n 906125

SAFETY FIRST: Please read and follow all Cautions and Warnings in this guide.



Signal Word and Consequence

This is the Safety Alert Symbol used to alert you to potential injury hazards. Obey all safety messages that follow this symbol to avoid possible injury or death.

COULD Result in:



WARNING

Major Injury or Death

COULD Result in:



CAUTION

Minor Injury

COULD Result in:

NOTICE

Product or Property Damage

IMPORTANT

Procedure and Product Information

WARNING

Follow manufacturers' instructions for hand and power tools. Always wear safety glasses. Failure to do so could result in injury, product or property damage.

WARNING

Windows and doors can be heavy. Use safe lifting techniques and a reasonable number of people with enough strength to lift, carry, and install window and door products. Heavier windows and doors will require mechanical assistance. Failure to do so could result in injury, product or property damage.

CAUTION

Metal components of the retractable insect screen may become hot when exposed to sunlight.

WARNING

Windows and doors have small parts (e.g. hole plugs, slot covers, spacers, fasteners, etc.). Small parts if swallowed could pose a choking hazard to young children. Dispose of unused, loose, or easily removed small parts. Failure to do so could result in injury.

CAUTION

Retractable screen and installation components can have sharp edges. Wear protective equipment when handling. Failure to do so could result in injury.

WARNING

- Metal fasteners and components could corrode when exposed to preservative-treated or fire-retardant treated lumber. Use approved fasteners and components to fasten window or door. Failure to do so could cause a failure resulting in injury, product or property damage.
- Fastener must attach to a structural framing member with a 1" minimum fastener embedment. Failure to do so could result in injury, product or property damage.
- **DO NOT** remove screws that attached installation clips or gusset plates to window or door frames. Doing so could result in injury, product or property damage.

CAUTION

Follow instructions of foam, sealant, and flashing manufacturers regarding safety, material application, compatibility, and periodic maintenance for continued weather resistance of their products. Failure to do so could result in injury, product or property damage.

NOTICE

Do not install retractable screen on your gliding patio door if temperature is below 40°F (4.44°C)

NOTICE

- Clean and prepare surfaces receiving sealant following sealant manufacturer's instructions. Failure to do so could result in water infiltration causing product or property damage.
- **DO NOT** use abrasive cleaners or solvents when cleaning Fibrex® material. Doing so could result in product damage. Go to andersenwindows.com for a list of recommended cleaners.

IMPORTANT

The retractable insect screen is intended for reasonable insect control and not the retention of objects, persons, or pets within the interior. The retractable insect screen will not stop a person from falling through the door.

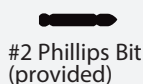
NOTICE

If the patio door or the trim materials installed around it are brittle, rotten, unstable, or do not have adequate attachment area so that the LuminAire® retractable screen cannot be installed correctly, the sliding insect screen door's performance may be impacted over time. Product or property damage could occur.

RECOMMENDED TOOLS



Safety Glasses



#2 Phillips Bit (provided)



Soft Cloth



Sealant (not provided)



Drill/Driver



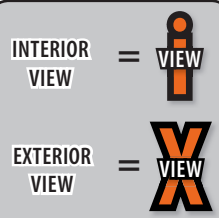
Screwdrivers



Scissors



Masking Tape



Interior view and exterior view icons are displayed on each illustration to indicate if you're viewing the step from the interior of the opening or the exterior of the opening. They are displayed in each step to help with the orientation of the view being shown.

1

PREPARE THE RETRACTABLE SCREEN DOOR

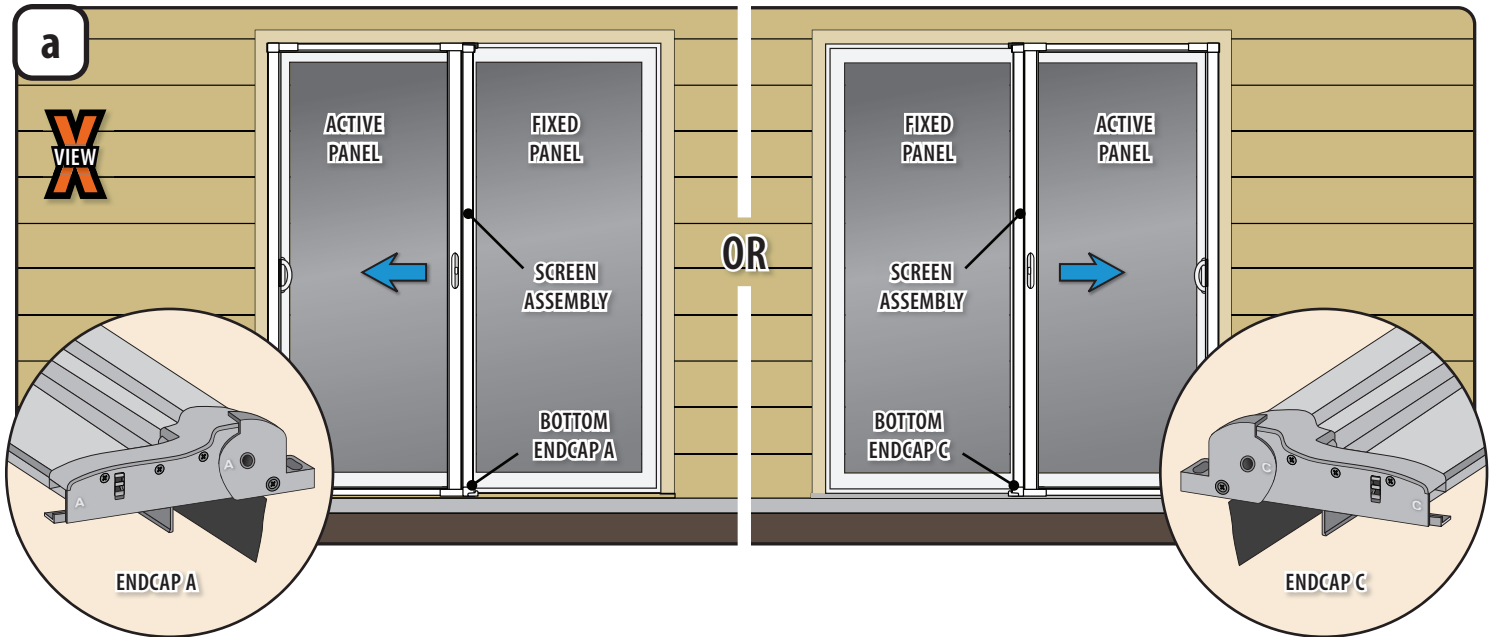
Tools Recommended:



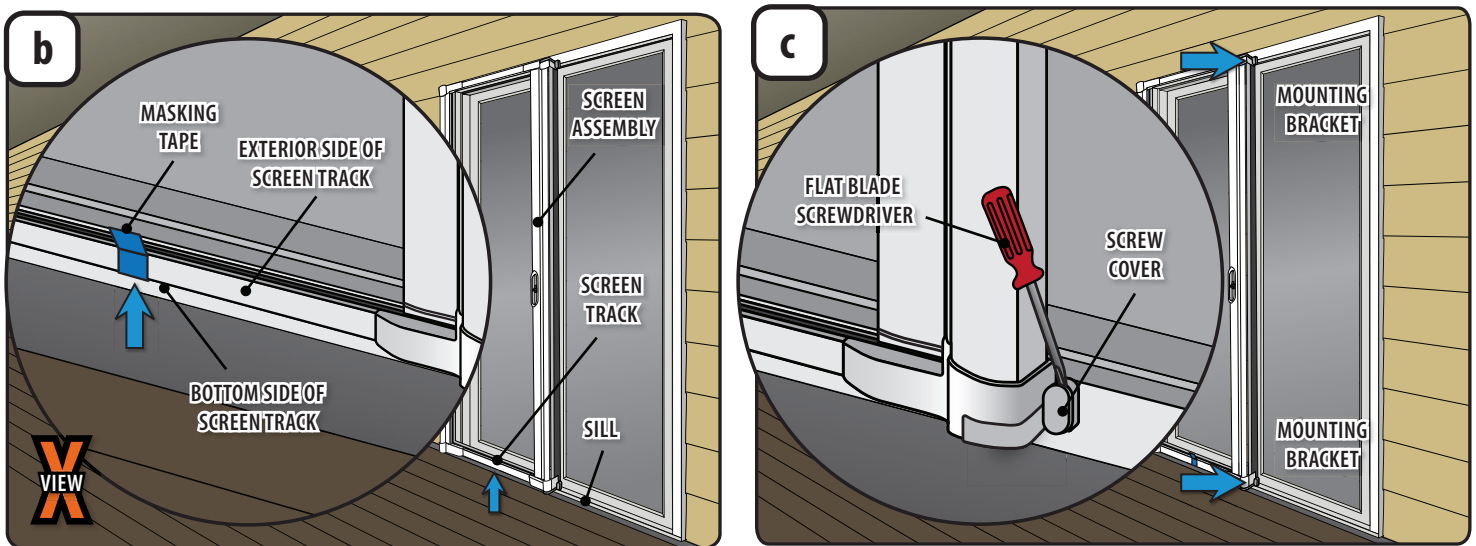
Flat Blade
Screwdriver



Masking
Tape



- a1** LuminAire Retractable Screen Doors come with universal handing, so take note of the **Screen Assembly's** orientation. This will be the orientation the **Screen Assembly** should be reinstalled in. Left Side Active Panel **Endcap A** will be at the Bottom or for Right Side Active Panel **Endcap C** will be at the Bottom, a photo can help as reference.



- b1** At the bottom of the **Screen Assembly** in the center of the **Screen Track**, apply **Masking Tape** starting at the **Bottom Side of the Screen Track**, wrapping it around to the **Exterior Side of the Screen Track**. Leaving a tag end loose for removal in a later step.

- c1** With a **Flat Blade Screwdriver**, remove the **Screw Covers** from the upper and lower **Mounting Brackets**. Set aside in a safe place for reinstallation in a later step.

2

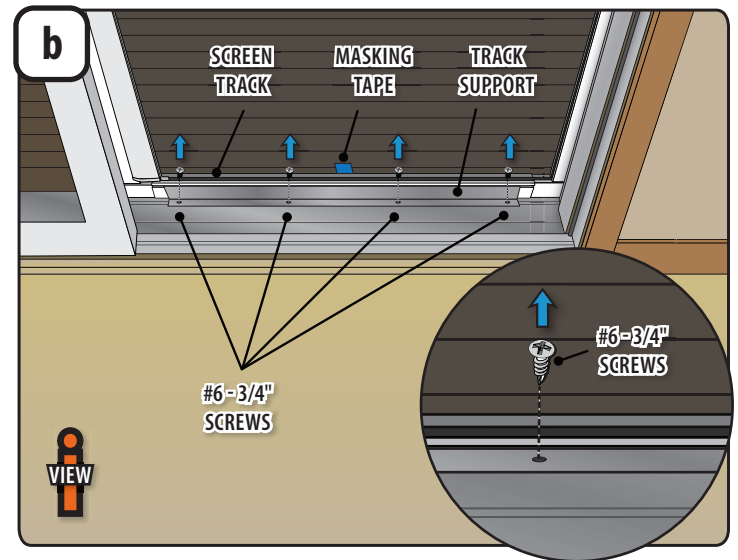
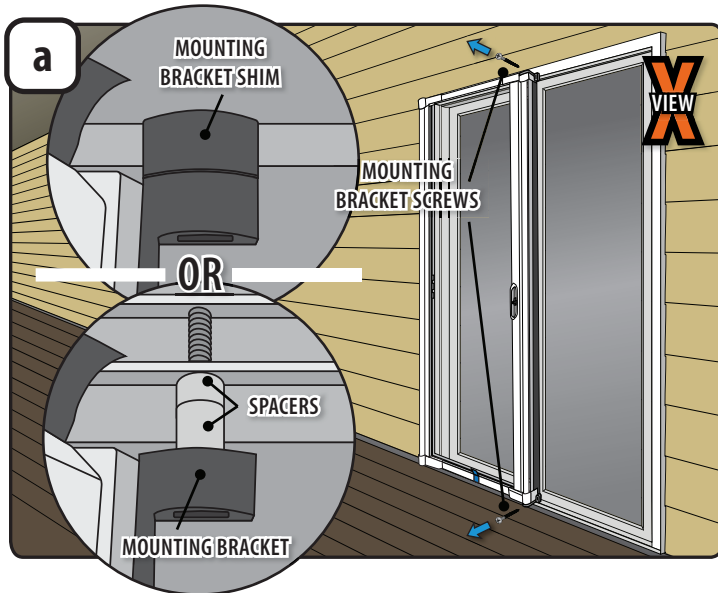
SCREEN ASSEMBLY REMOVAL

Tools Recommended:

#2 Phillips Bit
(provided)

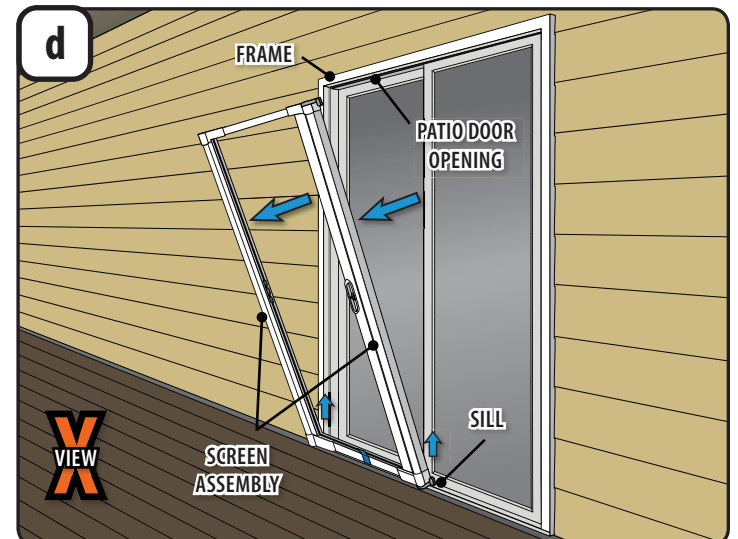
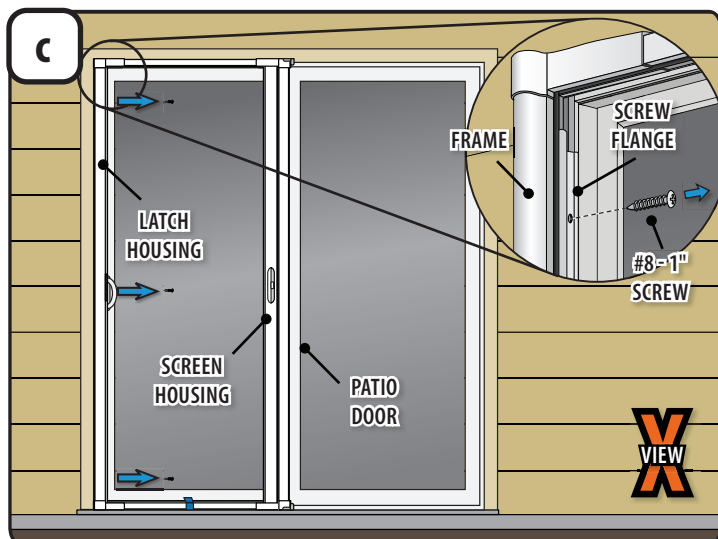


Phillips
Screwdriver



- a1** Inspect behind both **Mounting Brackets**. Make a note of what **Shim** or **Spacers** are used. The same combination must be used for reinstallation, a photo can help as reference.
- a2** From the exterior of the screen housing, remove the top and bottom **Mounting Bracket Screws**. Set aside in a safe place for reinstallation in a later step.

- b1** From inside the screen housing, remove the four (4) **#6-3/4\" Screws** from the **Track Support**. Set aside in a safe place for reinstallation in a later step.

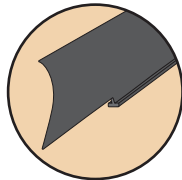


- c1** Firmly hold the **Screen Housing** against the **Patio Door** and remove the three (3) **#8-1\" Screws** from the **Screw Flange** on the **Latch Housing**. Set aside in a safe place for reinstallation in a later step.

- d1** Tip and lift **Screen Assembly** out of **Patio Door Opening** and place it flat on a non-abrasive surface with interior side facing up.

3

REPLACE SEALING FIN

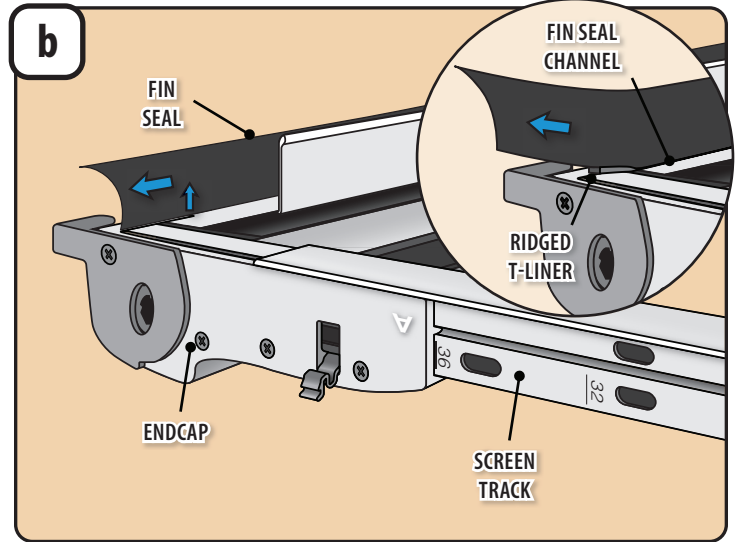
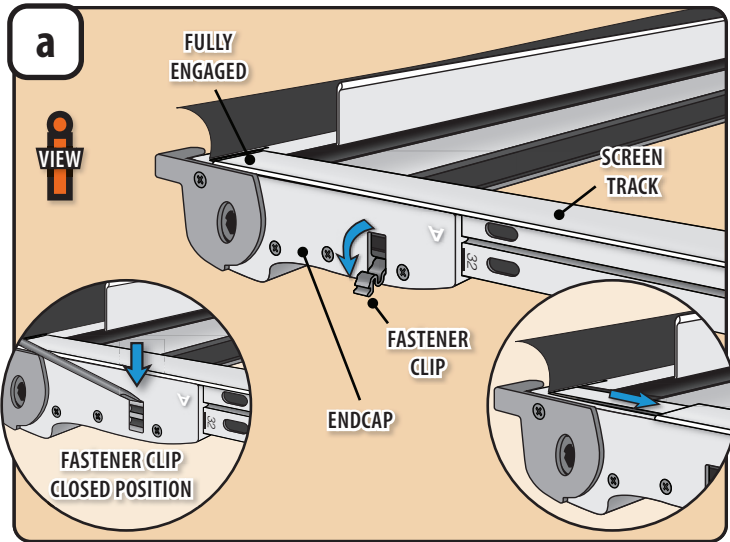


Fin Seal

Tools Recommended:

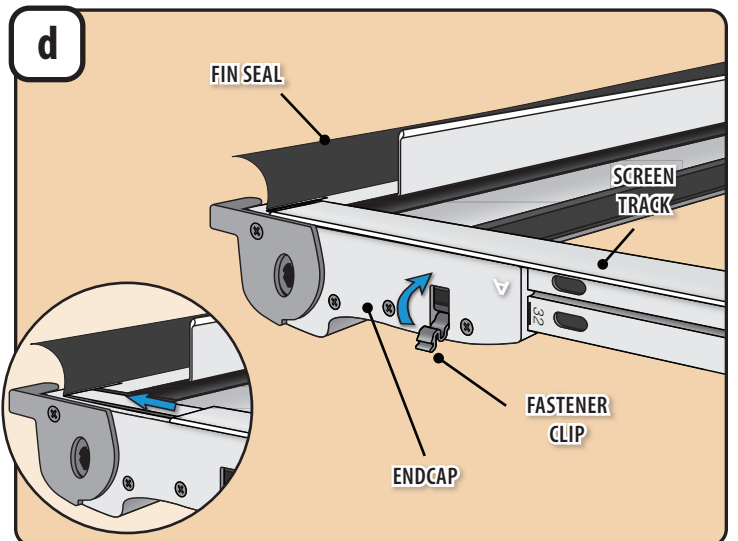
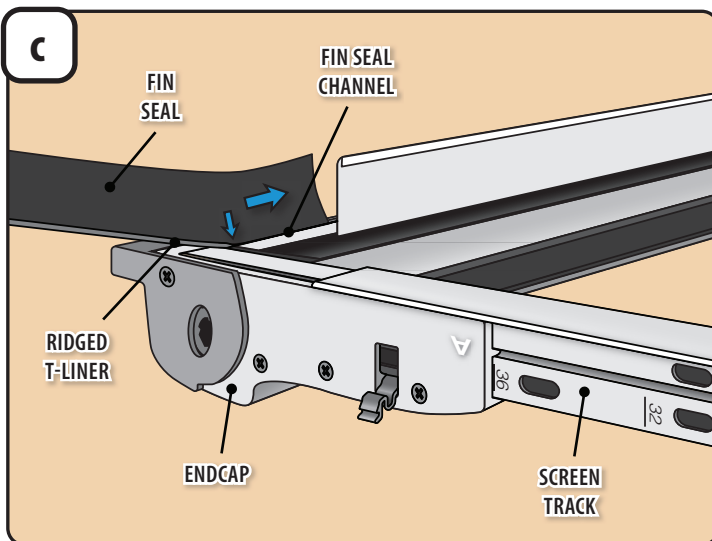


Flat Blade
Screwdriver



- a1** If Screen Track is Fully Engaged in the Endcap, then the Screen Track needs to be slid outwards to allow for Fin Seal removal. If the Screen Track is not Fully Engaged you can proceed to step B.
- a2** On Endcap, with a Flat Blade Screwdriver, apply downward pressure on the Fastener Clip and rotate into the open position.
- a3** Slide Screen Track back far enough so Fin Seal can be removed.

- b1** Lift the Fin Seal so the Ridged T-liner clears the Endcap and pull the Fin Seal out of the Fin Seal Channel.
- b2** Dispose of Fin Seal properly.



- c1** Install the new Fin Seal by guiding the Ridged T-liner into the Fin Seal Channel the old Fin Seal came out of.
- c2** Pull the Fin Seal all the way into position centering it in the Fin Seal Channel.

- d1** If Screen Track was fully engaged in the Endcap, slid the Screen Track back into its original position and rotate the Fastener Clip up into the closed position.

4

PLACE AND INSTALL SCREEN ASSEMBLY INTO OPENING

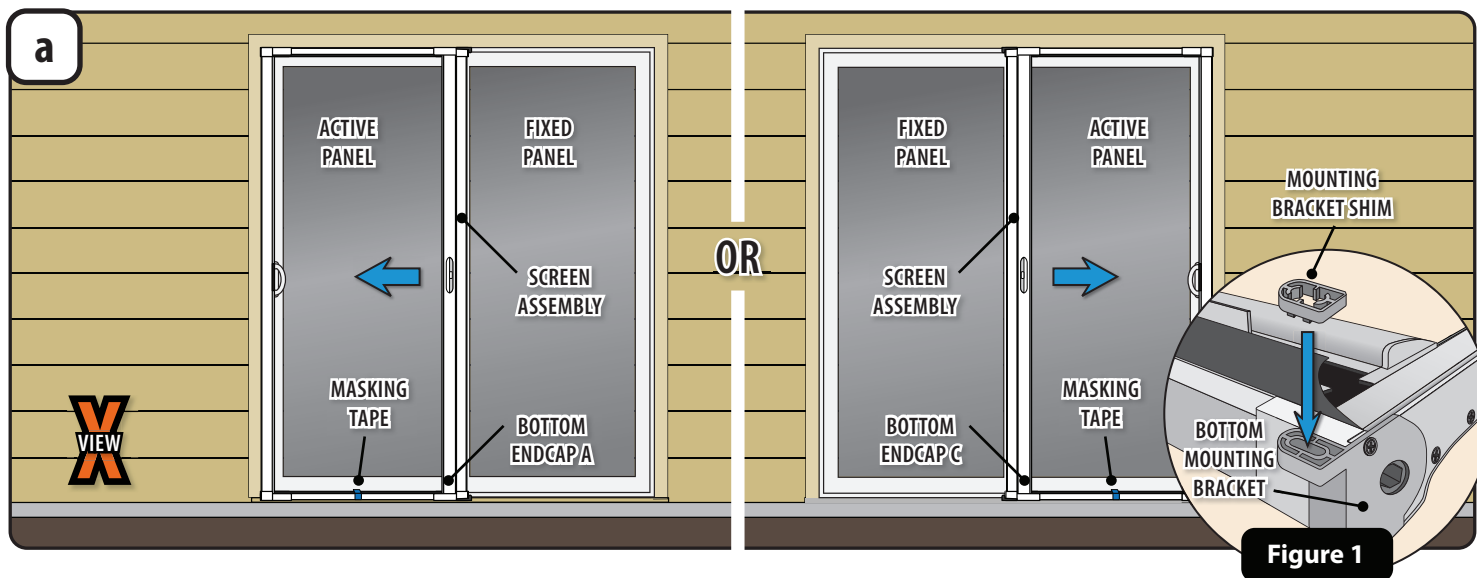
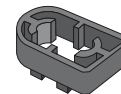
Tools Recommended:



Drill/Driver

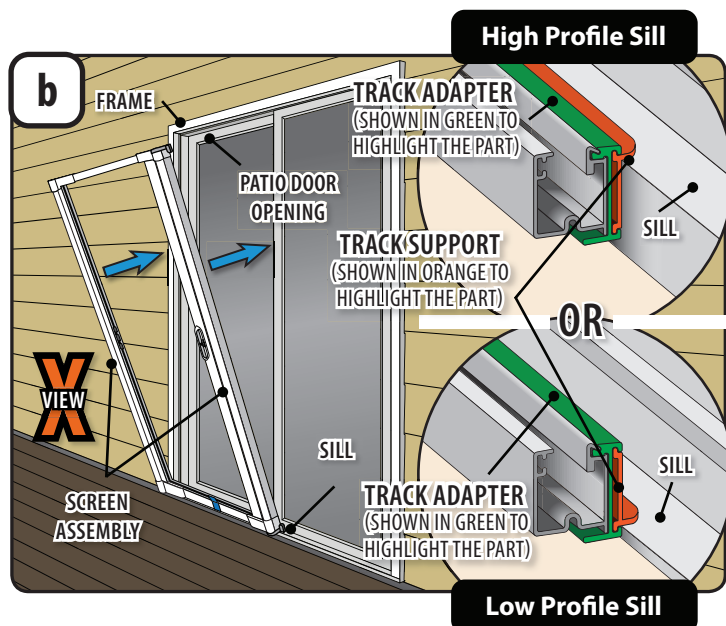
Phillips
Screwdriver#2 Phillips Bit
(provided)

REINSTALL SCREWS AND SHIM

#8-1"
(Qty 3)Mounting
Bracket Shim

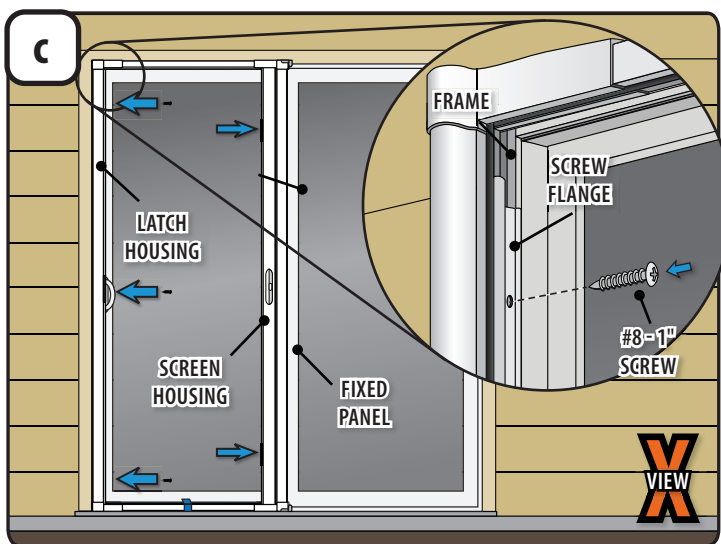
a1 Determine the proper orientation of the retractable insect **Screen Assembly** based on the noted orientation from Step a, section 1.

a2 If in Step a, section 2 you noted your installation had a **Mounting Bracket Shim**, install it onto the **Bottom Mounting Bracket** (see Figure 1).



b1 The **Screen Assembly** will be narrower than your opening until fully expanded in the following steps.

b2 Start by placing the **Screen Assembly** onto the exterior **Sill**, with the screw flanges extending into the **Patio Door Opening**. With the flange of the **Track Support** resting on top of the **Sill**, tip the assembly onto the exterior **Frame** of the Sliding Patio Door.



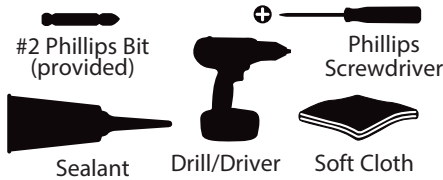
c1 Hold the **Latch Housing** side **Screw Flange** tight to the patio door **Frame** and reinstall the **#8x1" Screws** from the red screw pack. Do not overtighten.

c2 Slide **Screen Housing** side over until the **Screen Housing** mounting flange makes contact with the patio door **Fixed Panel**.

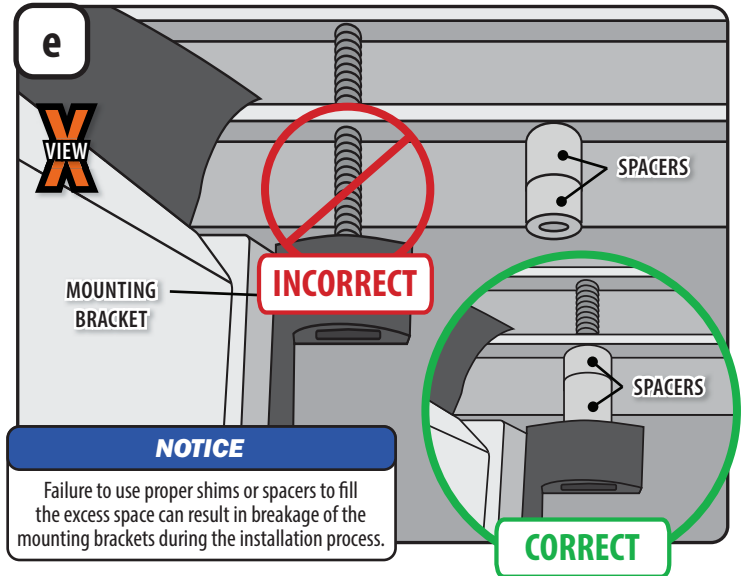
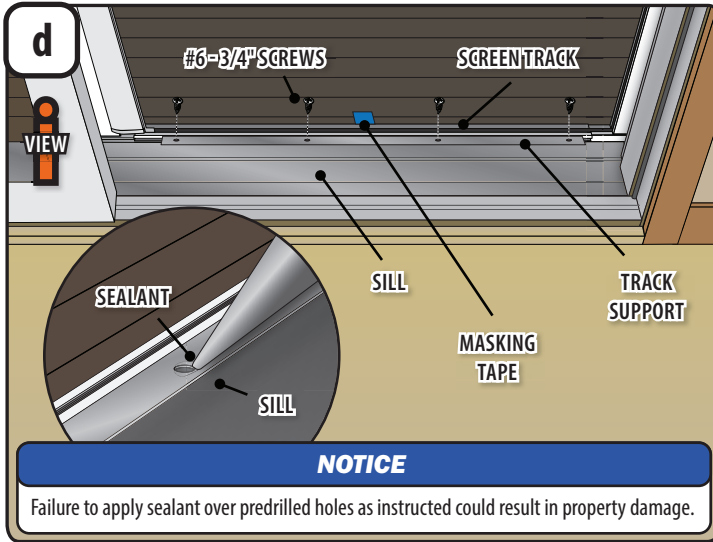
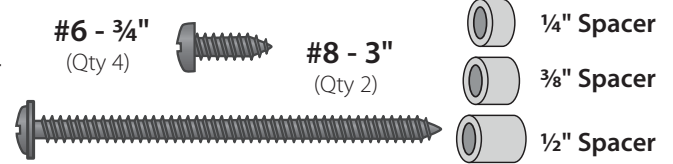
5

PLACE AND INSTALL SCREEN ASSEMBLY INTO OPENING

Tools Recommended:

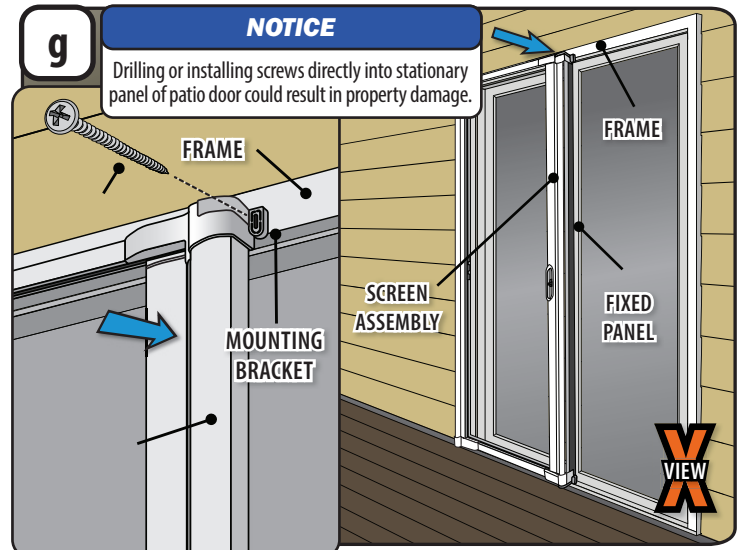
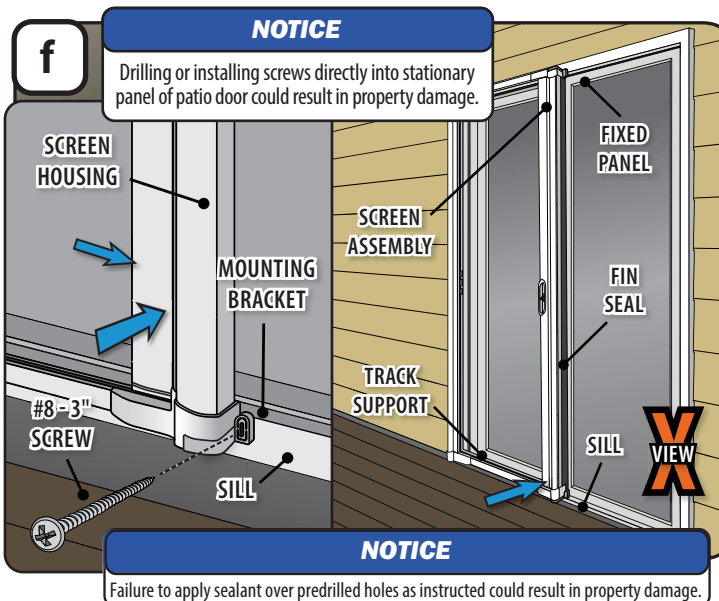


REINSTALL SCREWS AND SPACERS



- d1** Remove **Masking Tape** from **Track Support** and **Screen Track**.
- d2** Thoroughly clean the **Track Support** and **Sill**. Align the holes in **Track Support** to the predrilled holes in the **Sill**.
- d3** Apply sealant into predrilled holes until sealant over-flows onto **Track Support** surface. Fasten using **#6-3/4" Screws**, do not overtighten. Cleanup excess sealant with soft cloth.

- e1** In both of the following two steps you must fill any voids behind the **Mounting Bracket** and the patio door using the same type and amount of **Spacers** or Shim the retractable screen used when originally installed that you noted in step a, section 2.



- f1** Press the **Screen Assembly** tight to the **Sill** and confirm the **Mounting Flange** is tight to the **Fixed Panel**. Verify **Fin Seal** is not behind **Mounting Bracket** or the **Mounting Flange**.
- f2** If the **Mounting Bracket** is not tight to the **Frame** use the necessary bracket spacers to fill the gap (see step e).
- f3** Apply sealant in the **Mounting Bracket** slot over the predrilled hole.
- f4** With the **#8 - 3" Screw**, fasten the **Screen Housing** to the patio door **Frame**. Do not overtighten.

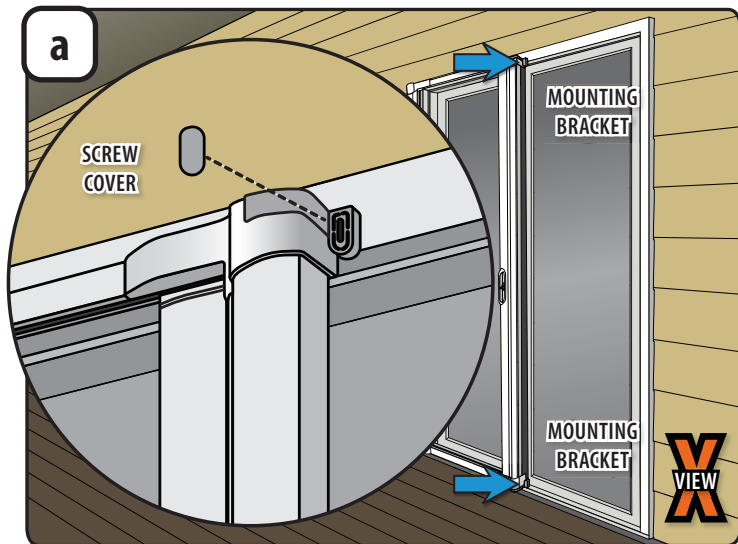
- g1** Verify the **Screen Assembly** is tight to the **Frame** and the **Mounting Flange** is tight to the **Fixed Panel**.
- g2** If the **Mounting Bracket** is not tight to the **Frame** use the necessary bracket spacers to fill the gap. (see step e)
- g4** With the **#8 - 3" Screw**, fasten the **Screen Housing** to the patio door **Frame**. Do not overtighten.

6

INSTALL MOUNTING BRACKET CAPS AND TRACK FOAM FILLER

REINSTALL SCREW COVERS

Screw Cover
(Qty 2)



a1 Install Screw Covers to both the upper and lower Mounting Brackets.